

## Autron Euroline, Slenderline, Sterling and Sovereign LST Radiators

### Style 'B', 'BB', 'D', 'DD' AND 'F'

#### Operating and Maintenance Instructions



These models feature an efficient Copper Aluminium Heat Emitter specifically designed for use within a Casing.

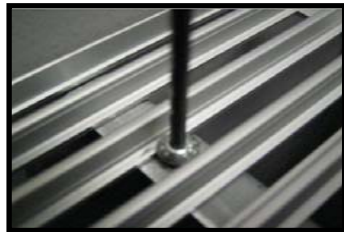
The Emitter will require occasional cleaning to remove dust. This can be achieved by use of a vacuum cleaner with hose attachment.

Occasional venting of the Emitter may be required, which is made possible after removing the Grille, using a standard air vent key on the top 1/8" BSPT air vent. Draining can be achieved through the lower air vent on all models except Slenderline.

On completion of the installation, the entire system must be thoroughly cleaned and flushed to remove debris/flux residues etc. If a chemical cleaner is used, it must be thoroughly flushed from the system. Following this, the system must be dosed with a good eminence water treatment to prevent corrosion.

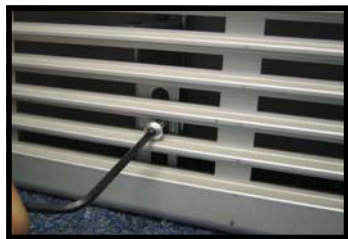
System design, flushing and dosing must be in accordance with BS 5449: 1990, BS EN 12828: 2003 and BS 7593: 1992

#### Grille Removal



Using a 2.5mm Allen Key remove the M4 Screws which retains the Top and/or Top Front Grilles. This will enable access to the Casing in order to vent the Emitter, and to vacuum the top of the Emitter.

Adjustment of the TRV can now be carried out. For TRV adjustment see manufacturers leaflet.



Using the 2.5mm Allen Key provided, remove the M4 Screws which retain the Bottom Grille. This will enable access to the Casing in order to vacuum beneath the Emitter.

#### Casing Removal

To remove the Casing; remove the screws that fix the top and Bottom Grilles to the mounting brackets, lift the Casing away from the Emitter. This operation would usually only be required if thorough washing of the Emitter was required.

#### General Cleaning

A general purpose furniture polish and soft cloth or duster will provide a good means of maintaining the Casing.

Notes on Valves: Hydrocarbons, including thread cutting oils/greases, will have an adverse effect on any EPDM components, such as valve seals, pump seals and flexible connections, in a pipework system.

Therefore it is essential that pipework systems are thoroughly cleaned of any residues, and that the use of water treatments containing mineral oils is avoided.

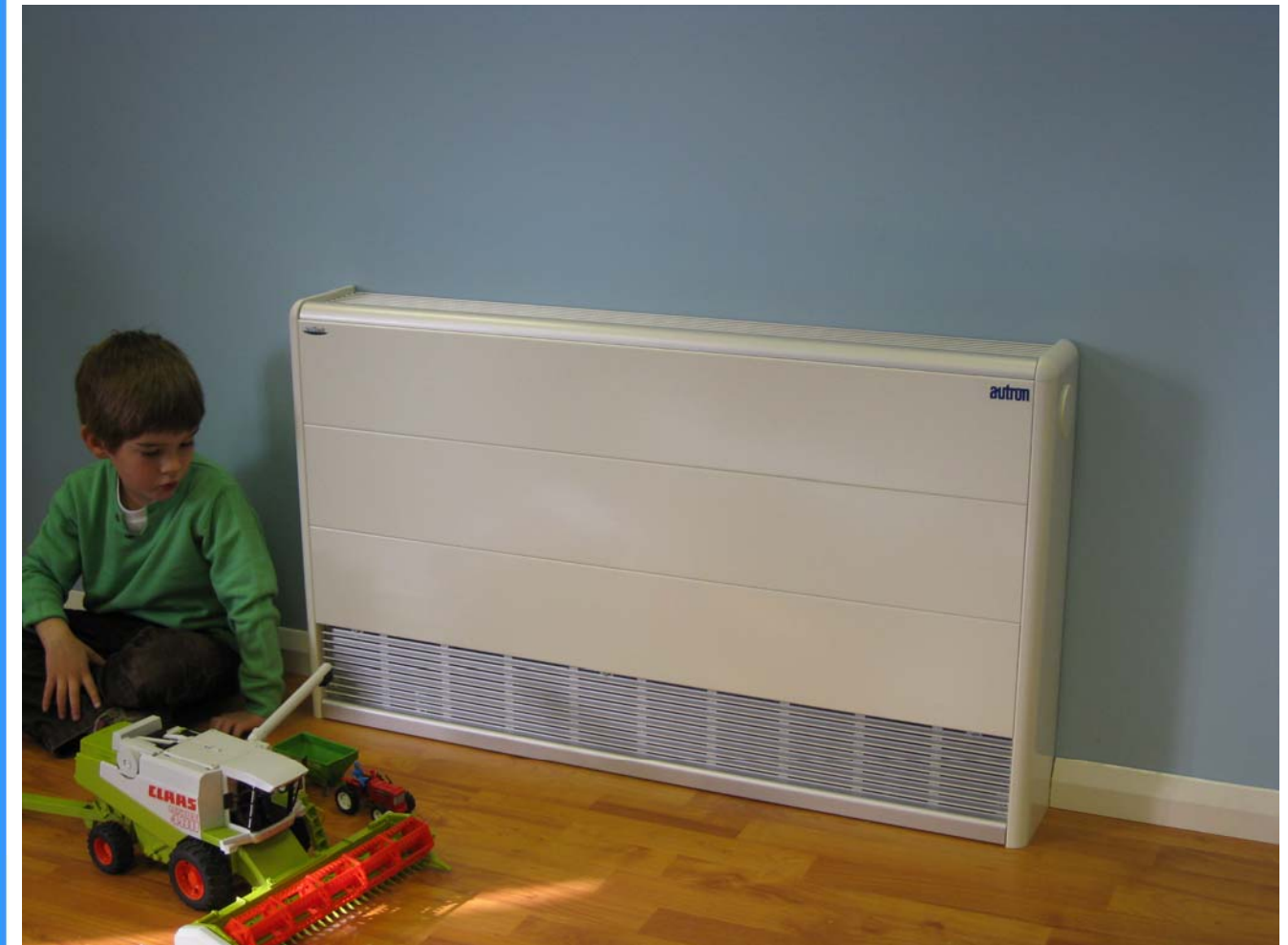
**autron**  
LST Radiators

## AUTRON EUROLINE, SLENDERLINE, STERLING and SOVEREIGN

### LST Radiators

#### Style 'B', 'BB', 'D', 'DD' AND 'F'

#### INSTALLATION INSTRUCTIONS (COPPER ALUMINIUM HEAT EMITTER)

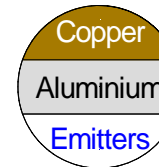


AUTRON PRODUCTS LTD  
17 SECOND AVENUE  
BLUEBRIDGE INDUSTRIAL ESTATE  
HALSTEAD  
ESSEX  
C09 2SU

TEL: 01787 473964  
FAX: 01787 474061

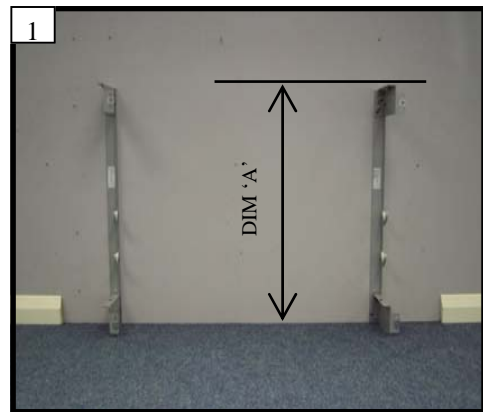


AUTRON STYLE 'B', 'BB', 'D', 'DD' AND 'F'  
COPPER ALUMINIUM EMITTER LST INSTALLATION



# Copper Aluminium Heat Emitters

## Bracket and Pipe Centre Positions

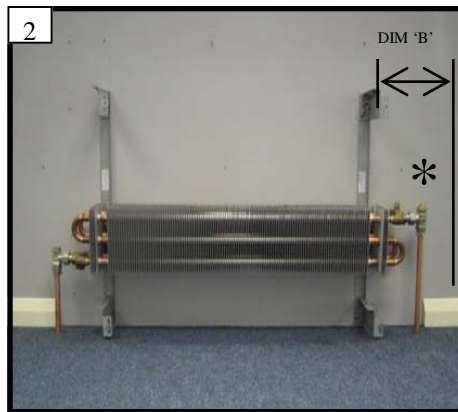


### Bracket Fixing Heights

The bracket fixing height (DIM 'A') is shown on a sticker on the bracket.

This height is relative to the finished floor level, noting that the bottom of the brackets may not be level with the floor.

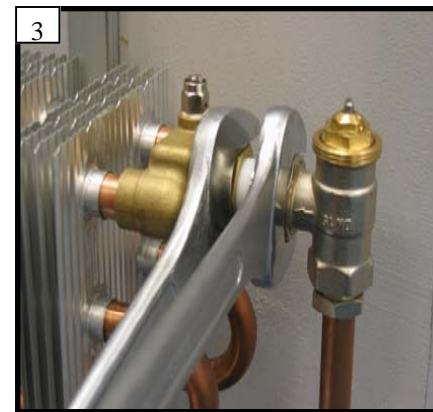
Brackets should be mounted in accordance with the spacing in the facing table.



Emitters are configured T.B.O.E DIM. 'B' = 175MM and should be measured from where the flow side end case is required. This dimension is to the hook side of the bracket. (\*)

NOTE: The flow side of the emitter is identified by the plastic tag. The emitters are universal and can be mounted with the flow either side.

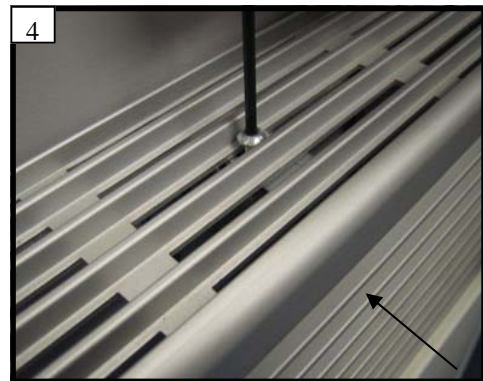
An airvent should be fitted on each manifold to permit venting and draining. These are supplied loose or in the valve set if supplied.



With all wall brackets securely fixed, hang the emitter onto the wall bracket hooks and fix valves and pipework. **(Ensure that the emitter tapping is supported when tightening the valve and fittings.)**

Fill emitter, flush and vent. See water treatment instructions on the reverse of this sheet.

Please refer to the manufacturers instructions to fit the valve kit. Or the Autron instructions if valves are supplied by Autron.

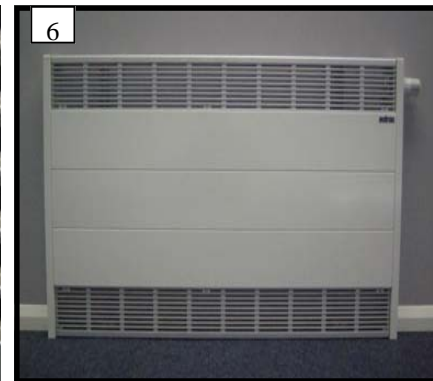


Place the casing onto the wall brackets and line up the flow side end case with the pencil mark or line. Fix top grille and/or the top front grille to the brackets with the M4 screws supplied.

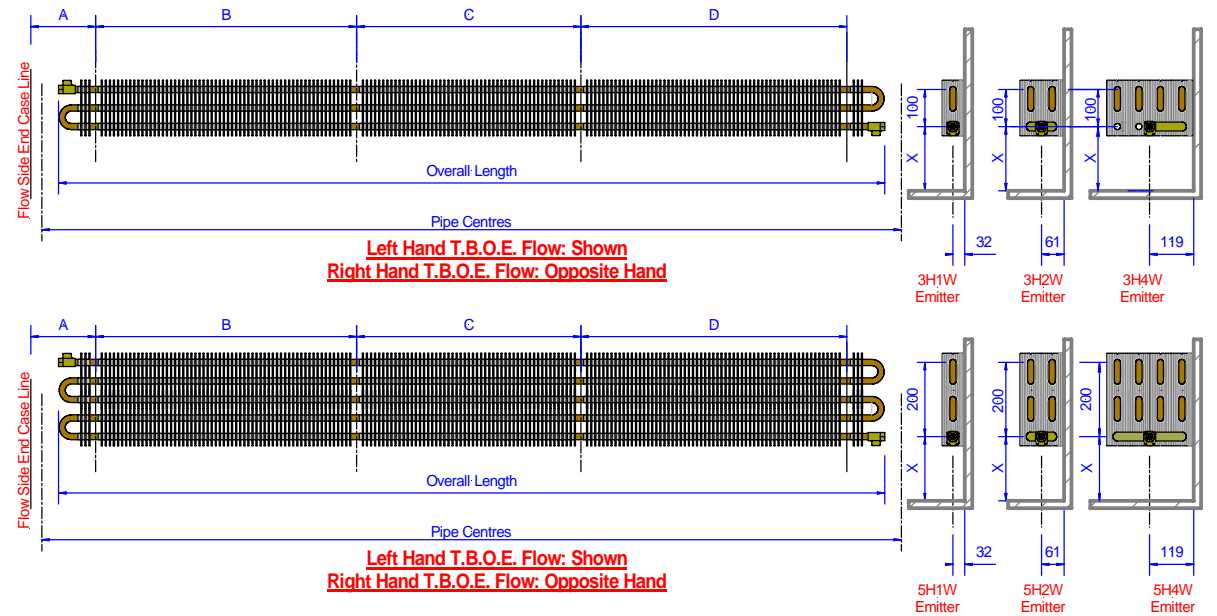
Do not seal the cases to the wall with sealant at this will prevent the removal of the case for maintenance.



Secure the bottom grille to the brackets with the M4 screws supplied.



Clean the casing with furniture polish.



The bottom tube of the emitter must always be located on lowest hook on the fixing bracket.

Dimension 'X' varies for each model from 190mm to 215mm approximately.

All 1 wide and 2 wide model emitters (3H1W, 5H1W, 3H2W and 5H2W) have 1/2" BSP connections. All 4 Wide (3H4W and 5H4W) models have 3/4" BSP connections.

Case Length mm	Dim "A" mm	Dim "B" mm	Dim "C" mm	Dim "D" mm	Overall Length mm	Pipe Centres mm
661 / 663	175	300	n/a	n/a	502	592
763 / 765	175	405	n/a	n/a	607	697
865 / 867	175	510	n/a	n/a	712	802
968 / 970	175	610	n/a	n/a	812	902
1070 / 1072	175	710	n/a	n/a	912	1002
1172 / 1176	175	820	n/a	n/a	1022	1112
1274 / 1278	175	920	n/a	n/a	1122	1212
1377 / 1381	175	1020	n/a	n/a	1222	1312
1479 / 1483	175	1120	n/a	n/a	1322	1412
1581 / 1585	175	610	610	n/a	1422	1512
1684 / 1688	175	610	710	n/a	1522	1612
1786 / 1790	175	710	710	n/a	1622	1712
1888 / 1892	175	710	810	n/a	1722	1812
1990 / 1994	175	810	810	n/a	1822	1912
2092 / 2096	175	810	920	n/a	1932	2022
2195 / 2199	175	910	920	n/a	2037	2127
2297 / 2301	175	910	1020	n/a	2137	2227
2400 / 2404	175	710	610	710	2232	2322
2502 / 2506	175	710	710	710	2337	2427
2604 / 2608	175	710	810	710	2442	2532
2706 / 2710	175	810	710	810	2542	2632
2809 / 2813	175	810	810	810	2642	2732
2911 / 2915	175	810	920	815	2742	2832