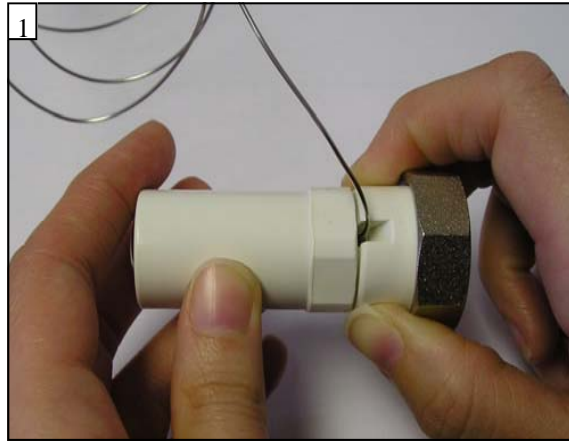


**VK4 ANTI LIGATURE TRV HEAD & SHROUD INSTALLATION INSTRUCTIONS**  
(for use with Sterling/Sovereign)



Dismantle the capillary. Thread the capillary through the valve access hole on the end panel of the casing.



Align setting number 3 to the mark on the cover of the TRV head before removing the front cover and the locking pins indicated above.



Place the shroud over the TRV Head with the extended edge at the top (at setting 3 as shown)



Place against the outside of the casing and locate the four holes of the TRV head and shroud. The capillary should pass through the casing at the lower edge of the centre hole. Fix with the extended M4 screws provided.



Re-assemble the capillary and fit to the TRV body, taking care not to kink or bend the capillary.

**WHEN INSTALLED ENSURE THE CAPILLARY DOES NOT EXTEND OVER THE TOP OF THE EMITTER AND DOES NOT TOUCH THE EMITTER OR HOT PIPES. AUTRON RECOMMEND THAT EXCESS CAPILLARY IS SECURED TO THE INSIDE OF THE END CASE.**

**VK5 VALVE KIT INSTALLATION INSTRUCTIONS**  
(FOR USE WITH SLENDERLINE & EUROLINE RADIATORS.)



Fit the remote transmitter to the valve body taking care not to kink or bend the capillary.



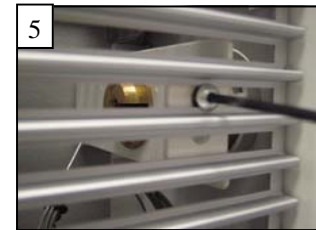
Remove the M4 screws securing the forward facing top grille and remove with an upward 'Hinge' movement.



Fit the valve head end of the remote transmitter to the bracket, taking care not to kink or bend the capillary. If the valve is required on the opposite end, remove the bracket and refit on the other end.



Fit the valve head to the remote transmitter.



Replace the forward facing top grille and ensure that the valve head bracket is also fixed through the grille.

**WHEN INSTALLED ENSURE THE CAPILLARY DOES NOT EXTEND OVER THE TOP OF THE EMITTER AND DOES NOT TOUCH THE EMITTER OR HOT PIPES. AUTRON RECOMMEND THAT EXCESS CAPILLARY IS SECURED TO THE INSIDE OF THE END CASE.**

**VK5 VALVE KIT INSTALLATION INSTRUCTIONS**  
(FOR USE WITH A SOVEREIGN & STERLING CASING).

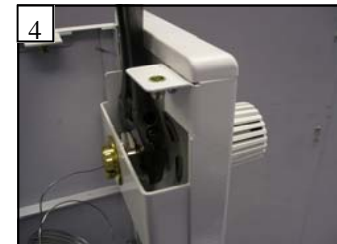


Fit the remote transmitter to the valve body taking care not to kink or bend the capillary.

The TRV head will need to be fitted to the casing before the casing is placed against the wall.  
(The following instructions are described with pictures taken from the rear aspect of the casing with the top/top front grille removed.)



Fit the valve head end of the remote transmitter to the bracket, taking care not to kink or bend the capillary. If the valve is required on the opposite end, remove the bracket and refit on the other end.



Fit the valve head to the remote transmitter.



Replace the top/top front grille (if removed).

**WHEN INSTALLED ENSURE THE CAPILLARY DOES NOT EXTEND OVER THE TOP OF THE EMITTER AND DOES NOT TOUCH THE EMITTER OR HOT PIPES. AUTRON RECOMMEND THAT EXCESS CAPILLARY IS SECURED TO THE INSIDE OF THE END CASE.**

For instructions on how to adjust the TRV, please see the Oventrop leaflet



## VALVE PRE-SETTING INSTRUCTIONS FOR OVENTROP AV6 VALVES

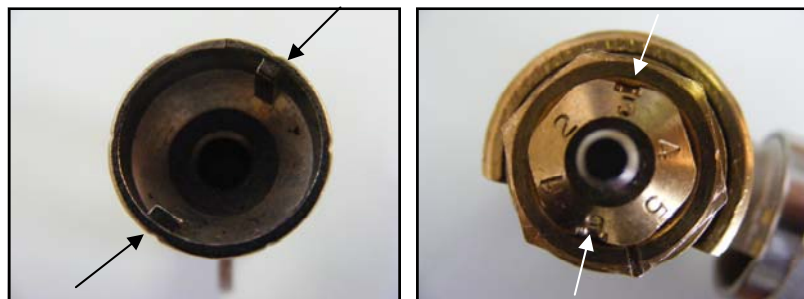
1 After fitting, the system must be flushed through with both the TRV and the lockshield valves left at the factory setting.



2 Place the presetting key on the valve insert, lining up the notches on the inside of the key with the indentations on the valve insert

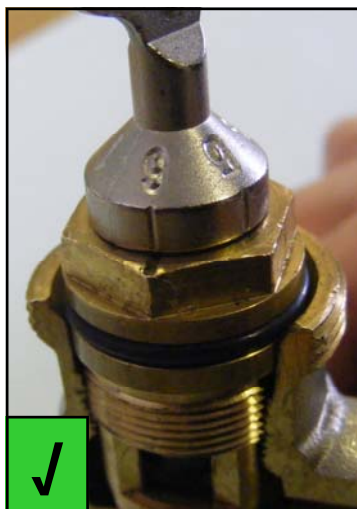
Please note that the key is designed to fit the insert in one position only and the numbers on the key will correspond to the numbers on the insert.

At this point, the setting number 6 will be aligned with a notch in the TRV body.

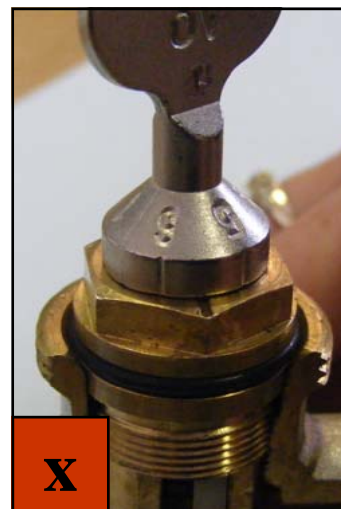


3 Line up this notch in the TRV body with the required setting number on the presetting key. (See our radiator schedule for the correct setting.)

The lines on the edge of the presetting key must be aligned with notch on the valve insert.



If the presetting key is not lined up with the notch in the valve insert nut, and the notch is between 2 settings, the valve will not work correctly.



4 Remove the key and fit the capillary.

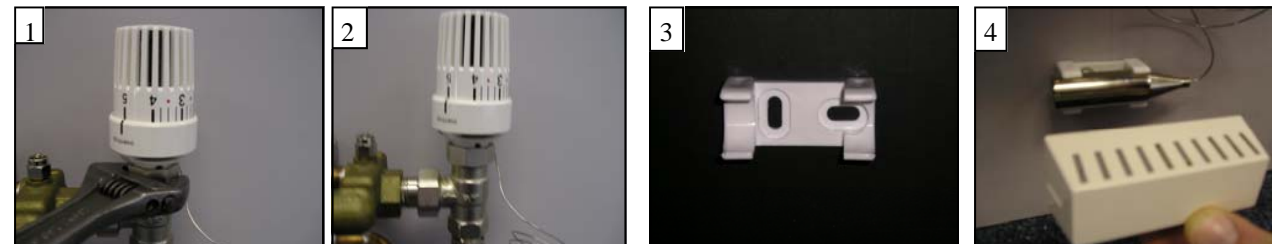
Note; If for any reason, the replacement of the valve insert is required, this can be achieved without needing to drain or turn off the system using the special Demo Bloc tool (see right).

Valve inserts for reverse flow or single pipe systems can be fitted in the same way.



## AUTRON VALVE KIT INSTALLATION INSTRUCTIONS

### VK3 VALVE KIT (FOR USE WITH ALL RADIATORS)



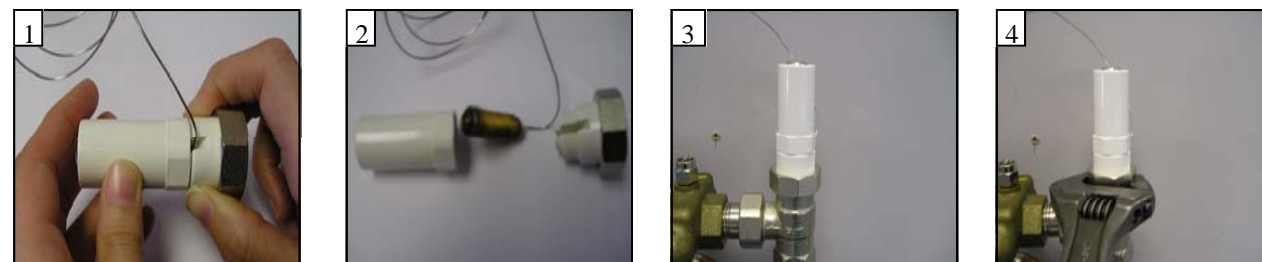
Fit the TRV head to the TRV body.

Fix the mounting clip for the remote pial to the wall underneath the emitter and directly in the path of the intake air flow.

Clip in the remote pial and place the cover over the top.

**WHEN INSTALLED ENSURE THE CAPILLARY DOES NOT EXTEND OVER THE TOP OF THE EMITTER AND DOES NOT TOUCH THE EMITTER OR HOT PIPES. AUTRON RECOMMEND THAT EXCESS CAPILLARY IS SECURED TO THE INSIDE OF THE END CASE.**

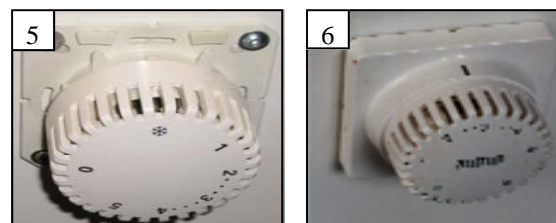
### VK4 VALVE KIT (FOR USE WITH SOVEREIGN AND STERLING RADIATORS)



Dismantle the capillary.

Thread the capillary through the valve access hole in the end panel of the casing.

Re-assemble the capillary and fit to the TRV body, being careful not to kink or bend the capillary.



Remove the front of the casing on the TRV head and fix the head to the end of the radiator casing using the M4 screws supplied.

Replace the front of the TRV head casing.

**WHEN INSTALLED ENSURE THE CAPILLARY DOES NOT EXTEND OVER THE TOP OF THE EMITTER AND DOES NOT TOUCH THE EMITTER OR HOT PIPES. AUTRON RECOMMEND THAT EXCESS CAPILLARY IS SECURED TO THE INSIDE OF THE END CASE.**

For instructions on how to adjust the TRV, please see the Oventrop leaflet.